

Assembly Guide

Shadow Boards



FRAGILE HANDLE WITH CARE FRAGILE HANDLE WITH CARE FRAGILE HANDLE WITH CARE FRAGILE HANDLE WITH CARE FRAGILE HANDLE WITH CARE FRAGILE HANDLE WITH CARE FRAGILE HANDLE WITH CARE

Mobile Shadow Boards

Single sided version



Please handle the shadow board with care whilst assembling. The frame is supplied with shadow board (side 1) attached.

1. Lay the frame on a work bench/table, shadow board face up. Please ensure the bench/table is covered with a material such as bubble wrap to protect surface of the shadow board, to avoid damage/scratch.
2. Attach the base sections (which includes the wheels), to the body of the frame using fixings provided. Loosely hand tighten with a spanner at this stage.



3. Stand the frame in its upright position. Make sure all 4 off wheels are sitting level on the floor then tighten the bolts securely.



4. Position and fix hooks/brackets into place on shadow board (side 1), referring to the supplied hook & bracket fitting guidance (page 4-8).

Assembly Guide

Shadow Boards



FRAGILE HANDLE WITH CARE FRAGILE HANDLE WITH CARE FRAGILE HANDLE WITH CARE FRAGILE HANDLE WITH CARE FRAGILE HANDLE WITH CARE FRAGILE HANDLE WITH CARE FRAGILE HANDLE WITH CARE FRAGILE HANDLE WITH CARE

Mobile Shadow Boards

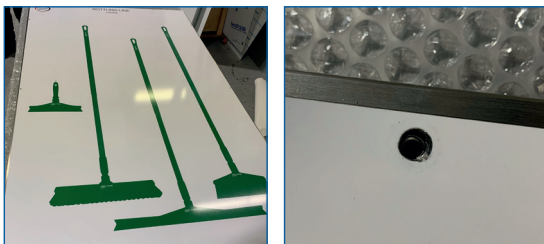
Double sided version

Please continue with the following instructions:

5. Position and fix hooks/brackets into place on shadow board (side 2) referring to the supplied hook & bracket fitting guidance (page 4-8).

6. Lay the frame on a work bench/table with shadow board (side 1) face down. Please ensure the shadow board face is supported so the hooks/brackets do not come into contact with the bench/table surface. We suggest a non-abrasive item such as blue tork roll is used.

8. Place the shadow board (side 2) face up on the frame. Please ensure the directions of the shadows mirror those on side 1. Line up the pre-drilled holes with threaded holes in the frame.



Please note the illustrations do not show hooks/brackets fixed into place!

9. Place a washer and screw in each pre-drilled hole, turn screw couple of times with your fingers. Once ALL the screws are in place hand tighten with an allen key.



10. Carefully stand frame in its upright position, shadow board is ready to use.

Assembly Guide

Shadow Boards



FRAGILE HANDLE WITH CARE **FRAGILE** HANDLE WITH CARE **FRAGILE** HANDLE WITH CARE **FRAGILE** HANDLE WITH CARE **FRAGILE** HANDLE WITH CARE **FRAGILE** HANDLE WITH CARE **FRAGILE** HANDLE WITH CARE **FRAGILE** HANDLE WITH CARE

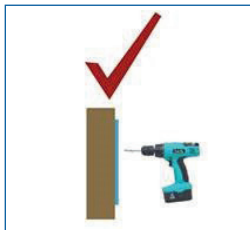
Wall Mounted Shadow Boards Mounting with Spacers



Please handle the shadow board with care whilst assembling.

If the board is ordered with spacers and hooks, then holes are pre-drilled for mounting these on the board. If the board is not ordered with spacers and hooks then holes are not pre-drilled.

1. Pre-drill with a sharp High Speed Steel (HSS) drill bit.
 - a. When pre-drilling please ensure that the board is held firm against a solid flat surface (see below illustration):



2. Align Board into position and mark drill location on the wall.

3. Use the enclosed 5 rawl-plugs and screws for mounting the spacers.



4. Do not overtighten screws (touch tight only).
5. The 5th spacer can be used for stabilizing the shadow board when mounting on the wall and equipped with tools.



Assembly Guide

Shadow Boards



FRAGILE HANDLE WITH CARE FRAGILE HANDLE WITH CARE FRAGILE HANDLE WITH CARE FRAGILE HANDLE WITH CARE FRAGILE HANDLE WITH CARE FRAGILE HANDLE WITH CARE FRAGILE HANDLE WITH CARE

Wall Mounted Shadow Boards

Mounting with Magnets



Magnets required per board:

1100/2100 = depends on size
1101/2101 = 4 x 1135
1102/2102 = 4 x 1135

1103/2103 = 6 x 1135
1104/2104 = 6 x 1121
1110/2110 = 4 x 1121

1111/2111 = 6 x 1121
1112/2112 = 6 x 1121
1140/2140 = 9 x 1121

How to attach Magnet to Shadow Board



1

Insert screw with washer into pre-drilled hole from the front of the shadow board and mount the magnet on the screw from the back of the shadow board.

Assembly Guide

Shadow Boards



FRAGILE HANDLE WITH CARE FRAGILE HANDLE WITH CARE FRAGILE HANDLE WITH CARE FRAGILE HANDLE WITH CARE FRAGILE HANDLE WITH CARE FRAGILE HANDLE WITH CARE FRAGILE HANDLE WITH CARE FRAGILE HANDLE WITH CARE

Hook & Bracket Fitting Guide

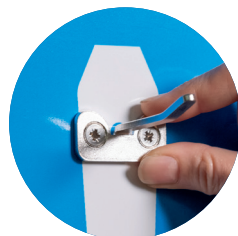


Single Metal Hook 1137

(is supplied from your tool supplier)

Fixings (supplied with your shadow board): 2 x screw - 2 x washer - 2 x self locking nut

How to attach Single Metal Hook to Shadow Board



Insert screws through metal hook from the front of the shadow board.

Place washer and self locking nut on the back of the shadow board.

Tighten securely.

Assembly Guide

Shadow Boards



FRAGILE  **FRAGILE**  **FRAGILE**  **FRAGILE**  **FRAGILE**  **FRAGILE**  **FRAGILE**
HANDLE WITH CARE HANDLE WITH CARE HANDLE WITH CARE HANDLE WITH CARE HANDLE WITH CARE HANDLE WITH CARE HANDLE WITH CARE HANDLE WITH CARE



Double Metal Hook 1138

(is supplied from your tool supplier)

Fixings (supplied with your shadow board): 1 x screw - 1 x washer - 1 x self locking nut

How to attach Double Metal Hook to Shadow Board



Insert screws through metal hook from the front of the shade board.

Place washer and self locking nut on the back of the shadow board.

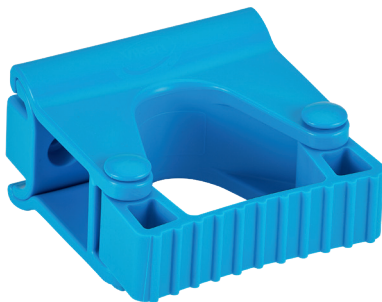
Tighten securely.

Assembly Guide

Shadow Boards



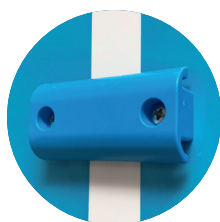
FRAGILE  **FRAGILE**  **FRAGILE**  **FRAGILE**  **FRAGILE**  **FRAGILE**  **FRAGILE** 
HANDLE WITH CARE HANDLE WITH CARE HANDLE WITH CARE HANDLE WITH CARE HANDLE WITH CARE HANDLE WITH CARE HANDLE WITH CARE HANDLE WITH CARE



Grip Band Module 1013x (is supplied from your tool supplier)

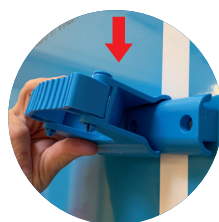
Fixings (supplied with your shadow board): 2 x screws - 2 x washer - 2 x self locking nut

How to attach Grip Band Module to Shadow Board



1

Place screws through base module from the front of shadow board (holes are pre-drilled for use) Place washer and self locking nut on the back of the shadow board. Tighten securely.



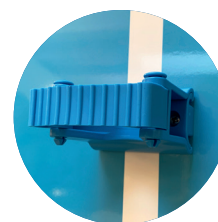
2

Position Grip Band module over the screws on the fixed base module. Click Grip band onto base module by pushing down.



3

“Slide” Grip Band in correct position on the base.



4

Grip Band module is ready for use.

Assembly Guide

Shadow Boards



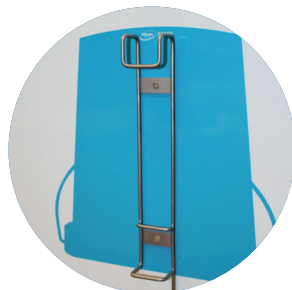
FRAGILE HANDLE WITH CARE FRAGILE HANDLE WITH CARE FRAGILE HANDLE WITH CARE FRAGILE HANDLE WITH CARE FRAGILE HANDLE WITH CARE FRAGILE HANDLE WITH CARE FRAGILE HANDLE WITH CARE



Bucket Bracket 16200 (is supplied from your tool supplier)

Fixings (supplied with your shadow board): 2 x screws - 2 x washer - 2 x self locking nut

How to attach Bucket Bracket to Shadow Board



Place screws through bucket bracket from the front of shadow board (holes are pre-drilled for use) Place washer and self locking nut on the back of the shadow board. Tighten securely.

Assembly Guide

Shadow Boards



FRAGILE HANDLE WITH CARE FRAGILE HANDLE WITH CARE FRAGILE HANDLE WITH CARE FRAGILE HANDLE WITH CARE FRAGILE HANDLE WITH CARE FRAGILE HANDLE WITH CARE FRAGILE HANDLE WITH CARE

Cleaning instruction

Shadow boards can be wiped down using a non-abrasive cloth with warm water and cleaning chemicals such as detergents and disinfectant.

It would **NOT** be advisable to use a pressure washer to clean the shadow boards. The use of Ammonia, Acetone and Bleach, should be avoided.

Visit us at vikan.com

